

solutions™

Dialite® LD Extra-Oral Polishing System
for Lithium Disilicate



Order Number:
K0240

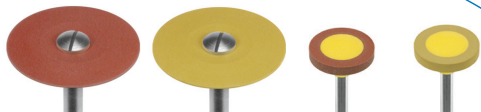


Figure Number	L20MLD.HP	L20FLD.HP	H8MLD.HP	H8FLD.HP
Head Size ($\frac{1}{10}$ mm)	200	200	110	110
Head Length (mm)	1.0	1.0	2.0	2.0



Figure Number	R17MLD.HP	R17FLD.HP	H2MLD.HP	H2FLD.HP	LD15M
Head Size ($\frac{1}{10}$ mm)	170	170	040	040	150
Head Length (mm)	2.5	2.5	13.0	13.0	3.0



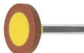

Only Available Direct from your Brasseler Representative
To order call 800.841.4522 or fax 888.610.1937
In Canada call 800.363.3838 or fax 866.330.4454
Visit our website at BrasselerUSA.com


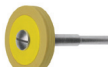


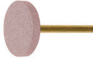
By Your Side In Dentistry



B-3796B-REVI-5022170L0-01.13-RRD

solutions™ K0240 Dialite® LD Extra-Oral Polishing System for Lithium Disilicate

	Order #	Head Size	Grit	Usage
	L20MLD.HP	200	M	Polishing - Interproximal Surfaces
	L20FLD.HP	200	F	Polishing - Interproximal Surfaces
	H8MLD.HP	110	M	Contact Surfaces
	H8FLD.HP	110	F	Contact Surfaces

	Order #	Head Size	Grit	Usage
	R17MLD.HP	170	M	Contact Surfaces
	R17FLD.HP	170	F	Contact Surfaces
	H2MLD.HP	040	M	Occlusal Surfaces
	H2FLD.HP	040	F	Occlusal Surfaces
	LD15M.HP	150	C	Grinder - Adjusting

TIPS & TECHNIQUES: Polishers produce best results when using both grits in order (medium and fine); medium red for pre-polishing and fine yellow for final polishing. Any adjustments should be made with the LD Grinder in coarse medium pink.

Complimentary items: Dialite Extra-Oral Diamond Paste (501524IU0), Diamond Discs (911H, 911HH, 911HV)

Power Suggestion: Brasseler Forza L50K Laboratory Motor with light pressure

Sterilization: Autoclave only

Recommended Speeds: 7,000-10,000 rpms

By Your Side In Dentistry

